



## 8201 - TRILOBA®

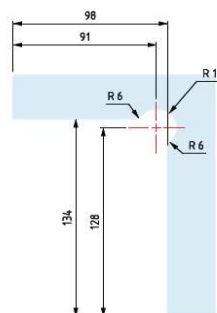
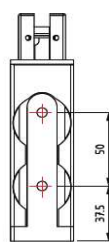
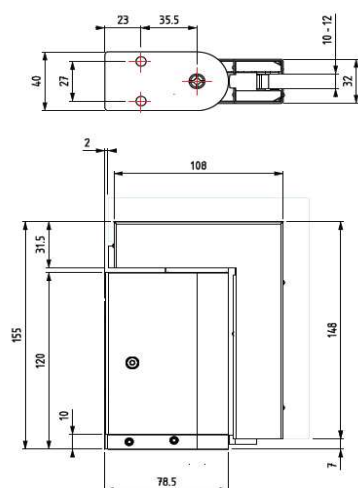
- Cerniera oleodinamica con regolazione delle velocità di chiusura dell'anta. Stop a 0° +90° -90°.
- Bisagra automática hidráulica inferior con regulación de velocidad de cierre de la puerta. Stop a 0°, + 90°, -90°.
- Oildynamic hinge with adjustment of the closing speed of the door. Stop at 0° +90° -90°.
- Hydraulisches Scharnier mit Regelung der Türschließgeschwindigkeit. Stopp bei 0° +90° -90°.



ugello di regolazione della velocità di chiusura.  
válvula de ajuste de la velocidad de cierre de la puerta.  
control valve for the closing speed of the door.  
Regelventil für die Türschließgeschwindigkeit.



EN 1154 : 2006

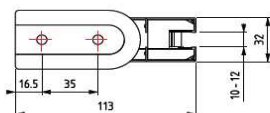
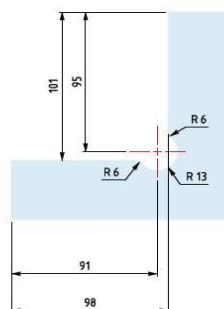
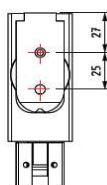
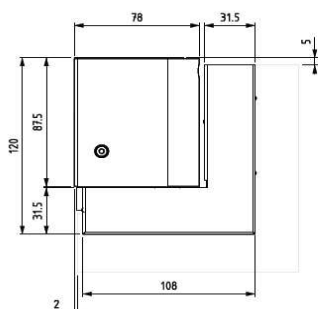


## 8202 - TRILOBA®

- Dissipatore oleodinamico con regolazione dell'intensità frenante.
- Bisagra automática hidráulica superior con dispositivo de frenado.
- Oildynamic hinge with control valve for brake.
- Hydraulischer Anpralldämpfer mit Regelung der Bremsstärke.



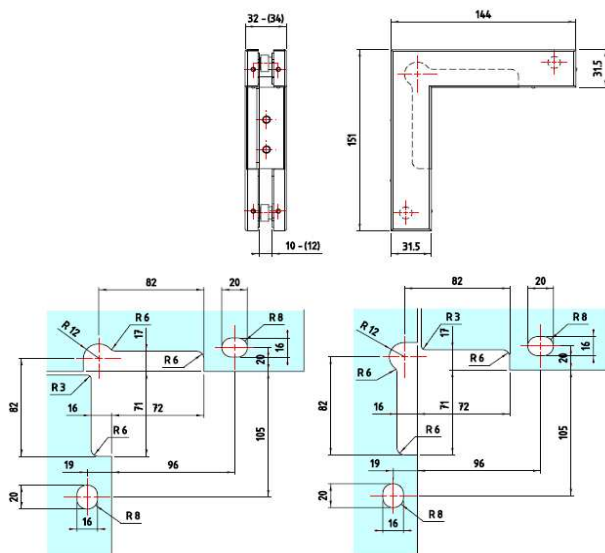
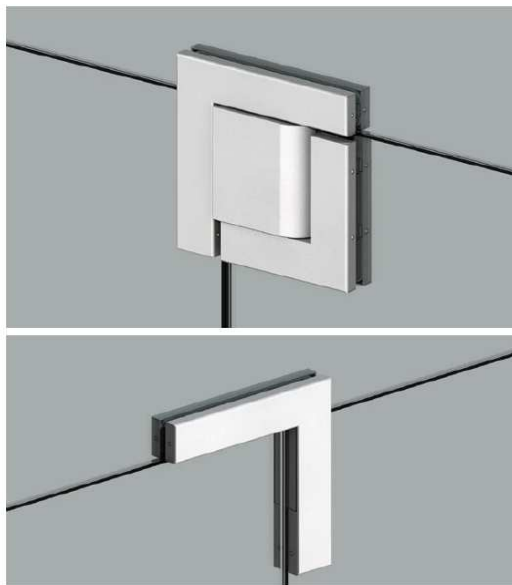
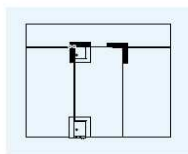
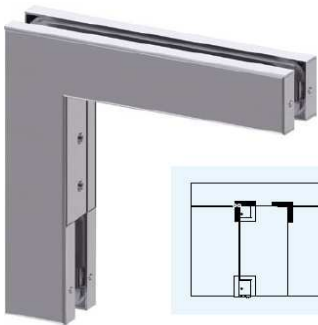
ugello di regolazione dell'intensità frenante  
válvula de ajuste de la velocidad de cierre de la puerta.  
Control valve for braking intensity.  
Regelventil der Bremsstärke.



**TRILOBA® accessori - accesorios - accessories - Zubehör**

**8205**

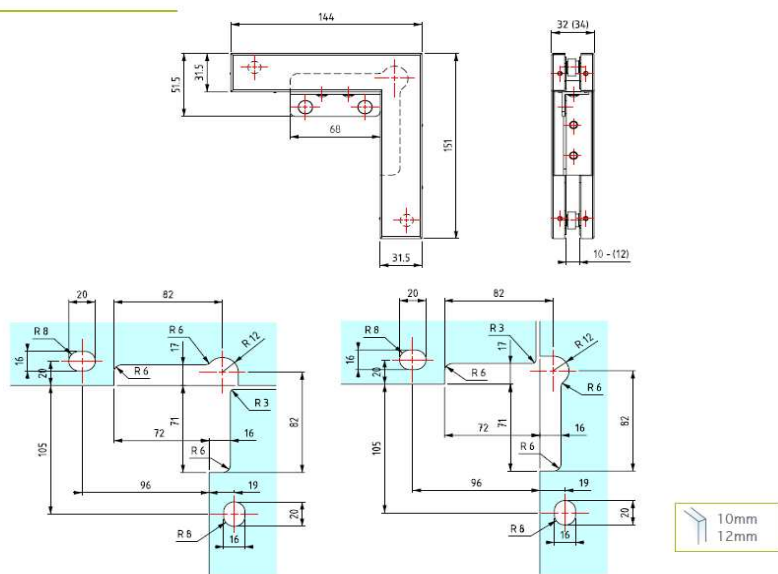
- Attacco sopra luce a vetro laterale senza battuta.
- Fijación a montante y a vidrio lateral para bisagra superior.
- Upper segment attachment-side glass without stop.
- Kupplung für Oberlichtfenster-Seitliches Glas ohne Anschlag.



**TRILOBA® accessori - acessórios- accessories - Zubehör**

## 8206

- Attacco sopra luce vetro laterale con battuta.
- Fijación a montante y a vidrio lateral con tope.
- Upper segment attachment-side glass with stop.
- Kupplung für Oberlichtfenster - Seitliches Glas mit Anschlag.



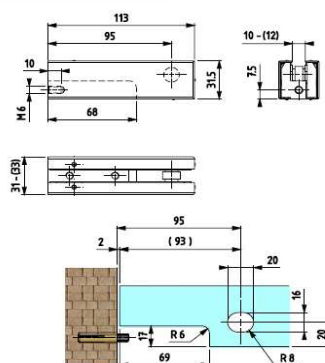
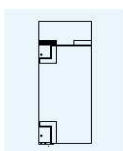


**TRILOBA® accessori - accesorios- accessories - Zubehör**

**8204**



- Attacco sopraluce a muro laterale senza battuta.
- Fijación a bisagra superior y montante sin tope.
- Upper-segment attachment-side wall without stop.
- Kupplung für Oberlichtfenster - Seitliche Wand ohne Anschlag.



**8204**



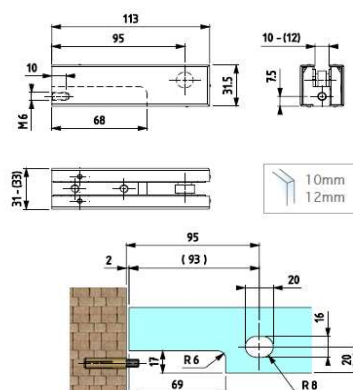
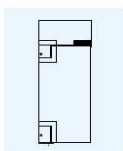
**8207**



**8207**



- Attacco sopraluce a muro laterale con battuta.
- Fijación a montante con tope.
- Upper-segment attachment-side wall with stop.
- Kupplung für Oberlichtfenster - Seitliche Wand mit Anschlag.

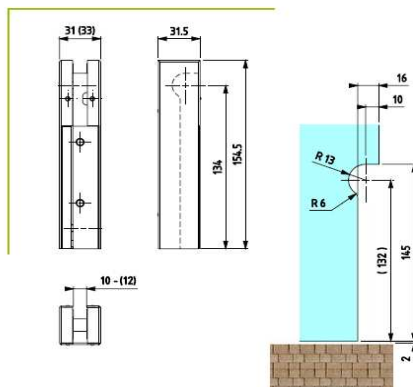
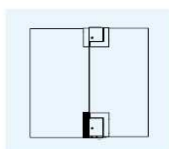


**TRILOBA® accessori - acessórios - accessories - Zubehör**

**8208**



- Attacco cerniera inferiore vetro laterale.
- Fijación a vidrio lateral para bisagra inferior.
- Bottom hinge attachment-side glass.
- Kupplung für unteres Scharnier - Seitliches Glas.



**8208**



**8209**



**8209**



- Attacco cerniera superiore vetro laterale.
- Fijación a vidrio lateral para bisagra superior.
- Upper hinge attachment-side glass.
- Kupplung für oberes Scharnier - Seitliches Glas.

