

GLASSVIT.

Partition wall systems / Trennwand-Systeme
Supports d'auvent / Scheidingswandsystemen

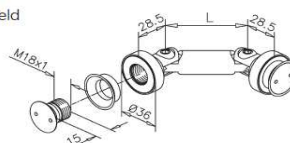
304
V2A

Connector with sunken cap, adjustable, glass/glass, satin stainless steel

Glasverbinder mit Senkkopf, variabel, Glas/Glas, V2A gebürstet
Raccord variable à tête noyée, verre/verre, inox brossé
Connector met verzonken kap, variabel, glas/glas, RVS geborsteld



Art.Nr.	L	glass / Glas / verre / glas
44.0780.060.12	60 mm	10 - 12 mm
44.0780.082.12	82 mm	10 - 12 mm



Pin wrench see page 336
Stirnloch-Schlüssel siehe Seite 336
Clé pour vis à trous voir page 336
Vorkleutel zie pagina 336

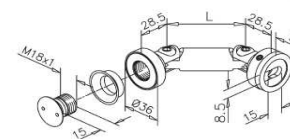
304
V2A

Connector, adjustable, glass/wall, satin stainless steel

Glasverbinder, variabel, Glas/Wand, V2A gebürstet
Raccord variable, verre/mur, inox brossé
Connector, variabel, glas/wand, RVS geborsteld



Art.Nr.	L	glass / Glas / verre / glas
44.0781.060.12	60 mm	10 - 12 mm
44.0781.082.12	82 mm	10 - 12 mm



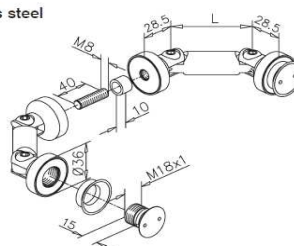
304
V2A

Connector set, adjustable, glass/glass/glass, satin stainless steel

Glasverbinder-Set, variabel, Glas/Glas/Glas, V2A gebürstet
Raccord variable milieu, verre/verre/verre, inox brossé
Connector dubbel, variabel, glas/glas/glas, RVS geborsteld



Art.Nr.	L	glass / Glas / verre / glas
44.0782.060.12	60 mm	10 - 12 mm
44.0782.082.12	82 mm	10 - 12 mm



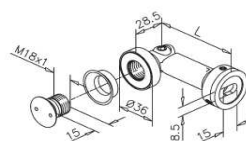
304
V2A

Connector, adjustable, glass/wall, satin stainless steel

Glasverbinder, variabel, Glas/Wand, V2A gebürstet
Raccord variable, verre/mur, inox brossé
Connector, variabel, glas/wand, RVS geborsteld



Art.Nr.	L	glass / Glas / verre / glas
44.0784.075.12	75 mm	10 - 12 mm



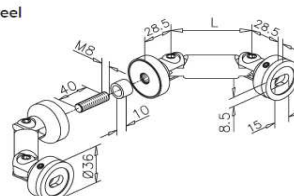
304
V2A

Connector set, adjustable, wall/glass/wall, satin stainless steel

Glasverbinder-Set, variabel, Wand/Glas/Wand, V2A gebürstet
Raccord variable milieu, mur/verre/mur, inox brossé
Connector dubbel, variabel, wand/glas/wand, RVS geborsteld



Art.Nr.	L	glass / Glas / verre / glas
44.0783.060.12	60 mm	10 - 12 mm
44.0783.082.12	82 mm	10 - 12 mm



GLASSVIT.

Partition wall systems / Trennwand-Systeme
Supports d'auvent / Scheidingswandsystemen

