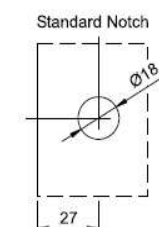
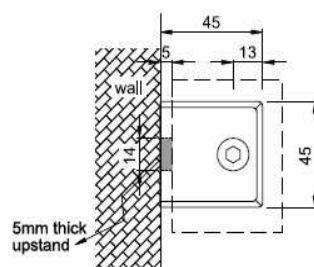


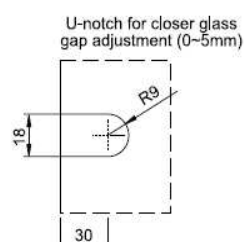
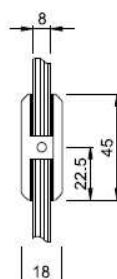


PC401

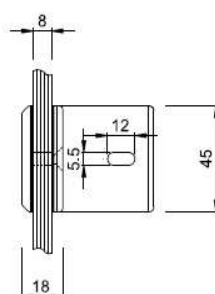
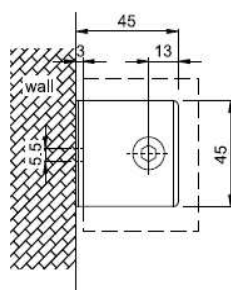
90° Glass to Wall



Glass Notch

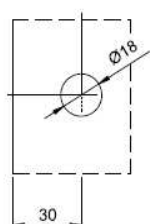


Glass Notch

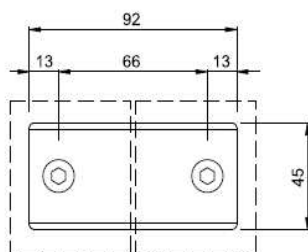


PC401L

90° Glass to Wall

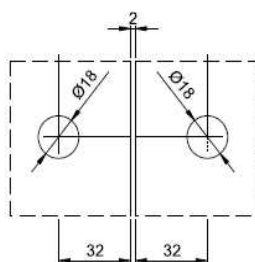


Glass Notch

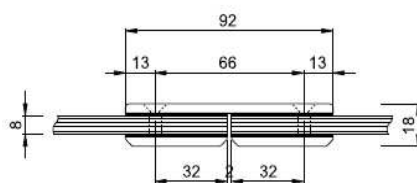


PC402

180° Glass to Glass

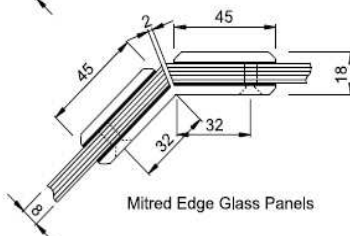
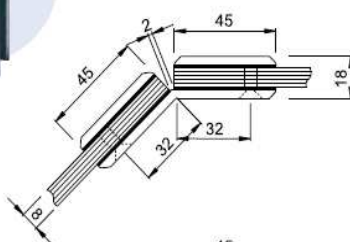


Glass Notch

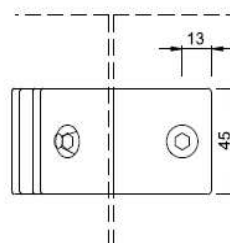


PC403

135° Glass to Glass



Mitred Edge Glass Panels

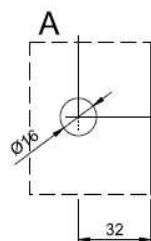
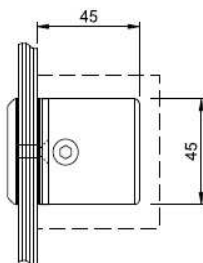


Glass Notch

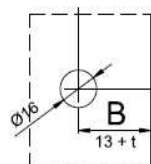
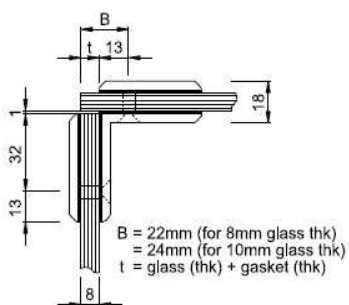


PC404

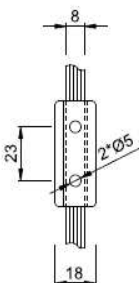
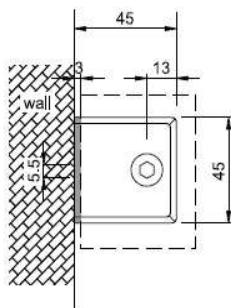
90° Glass to Glass



Glass Notch

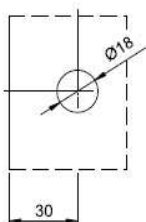


Glass Notch

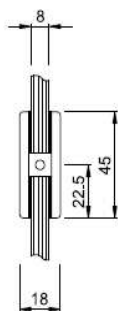
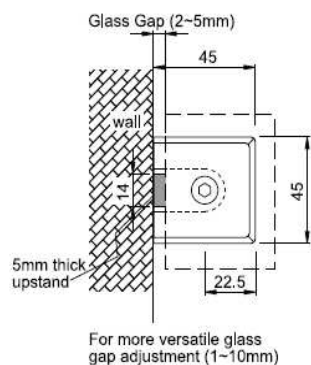


PC405

90° Glass to Wall
(2-Hole Fixing)

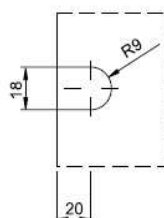


Glass Notch



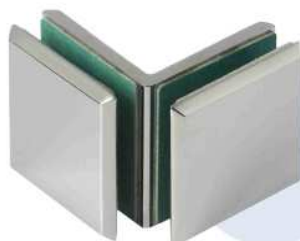
PC406

90° Glass to Wall



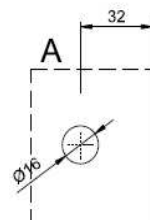
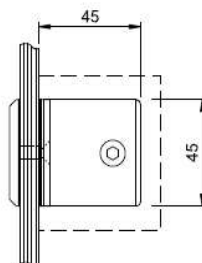
U-notch for closer glass gap adjustment (0~5mm)

Glass Notch

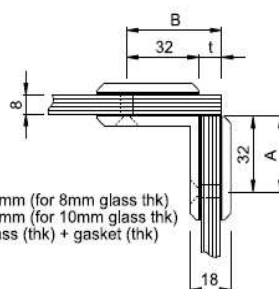


PC414

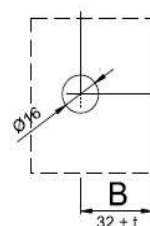
90° Glass to Glass



Glass Notch



B = 41mm (for 8mm glass thk)
= 43mm (for 10mm glass thk)
t = glass (thk) + gasket (thk)



Glass Notch